



Installation and operation manual

manual

Daikin Altherma simplified user interface

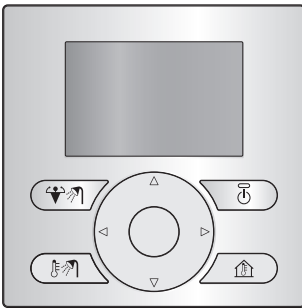


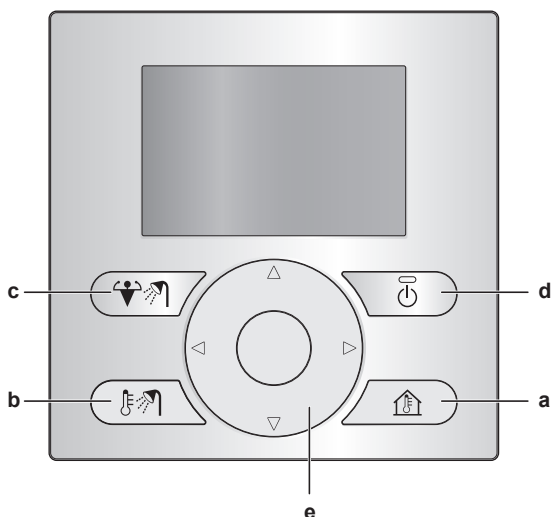
Table of Contents

For the user	2
1 Buttons	2
2 Status icons	2

For the installer	3
3 Overview: Installation and configuration	3
4 To connect the simplified user interface	3
5 To update the software with Updater	3
6 To update the software manually	4

For the user

1 Buttons



- a** **SPACE HEATING/COOLING CONTROL**
Go to the room temperature home page, where you can:
 - Read out the actual room temperature.
 - Press or to adjust the desired room temperature.
 - Press to turn ON or OFF the room temperature control.
- b** **DOMESTIC HOT WATER CONTROL**
Go to the domestic hot water home page, where you can:
 - Read out the actual domestic hot water tank temperature (only if the system contains a domestic hot water tank).
 - Read out the desired instant domestic hot water temperature (only in case of instant domestic hot water production by a boiler).
 - Press to turn ON or OFF the domestic hot water control.
- c** **DHW TANK BOOSTER MODE**
Activate the DHW tank booster mode (only if the system contains a domestic hot water tank, and provided that the domestic hot water control is turned ON).
- d** **ON/OFF**
Turn ON or OFF the space heating/cooling or domestic hot water control (on the respective home pages).
- e** **NAVIGATION BUTTONS**
Adjust the desired room temperature (on the room temperature home page).

2 Status icons

Icon	Description
	Space operation mode = Heating.
	Space operation mode = Cooling.
	Domestic hot water operation.
	The DHW tank booster mode is active.
	Unit is operating.
	Actual temperature.
	Desired temperature.
	A malfunction occurred.
	Emergency operation is active.

If or is displayed, check the main user interface for more information or, if necessary, contact your installer.

For the installer

3 Overview: Installation and configuration

Installation

- The simplified user interface can only be used in combination with the main user interface.
- The main user interface acts as control centre and needs to be installed near the unit.
- The simplified user interface acts as room thermostat and needs to be installed in the room that you want it to control.

Configuration

It is required that the simplified user interface has the same software version as the main user interface. If necessary, update the least up-to-date interface. You can find the software version on the box of each interface.

There are two ways to update the software:

- By using the Updater software.
- By manually updating the software.

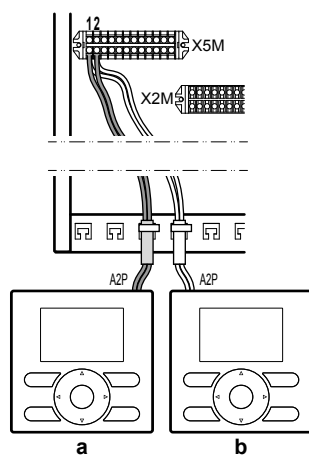


INFORMATION

To update the software, it is recommended to use Updater. Updating the software manually can take up to 2.5 hours.

4 To connect the simplified user interface

- 1 Connect the cable of the simplified user interface to the indoor unit.



- a Main user interface
b Simplified user interface

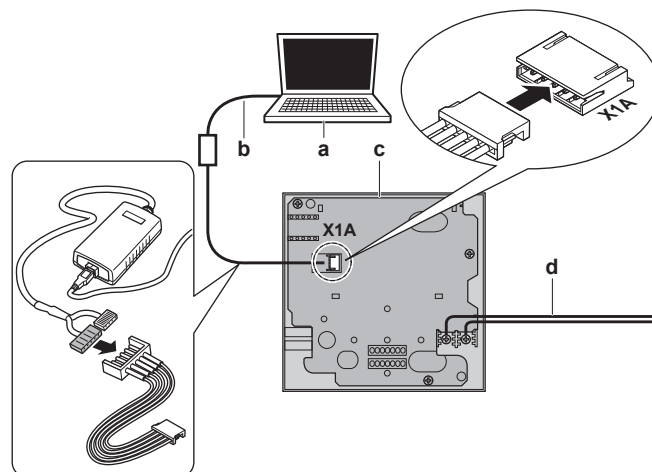
- 2 Fix the cable with cable ties to the cable tie mountings.

5 To update the software with Updater

Prerequisite: PC with Updater (contact your dealer for the correct version of the software)

Prerequisite: PC USB cable EKPCAB3 or higher (includes a USB cable and additional connection cables)

- 1 Make sure that the indoor unit is powered OFF.
- 2 Connect the user interface to the PC.



- a PC with Updater
b USB cable
c User interface PCB
d To indoor unit

- 3 Power ON the indoor unit.
- 4 Open Updater.
- 5 In Updater, go to "Update procedure".
- 6 Type in the name of the interface (EKRUCL* or EKRUCLB, depending on which you are updating).
- 7 Select the desired language pack (only for EKRUCL*).
- 8 Follow the on-screen instructions.

6 To update the software manually

6 To update the software manually

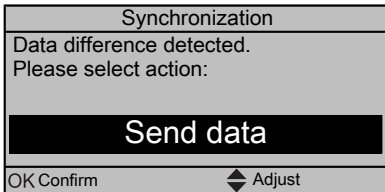
A manual software update consists of:

- 1 Copying the software of the most up-to-date user interface to the least up-to-date user interface.
- 2 Converting the updated user interface back to its intended state.

To copy the software

- 1 Power ON the indoor unit.

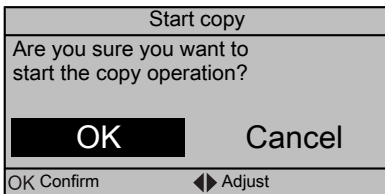
Result: Both interfaces display the following screen:



- 2 Select the required action:

If	Then
The main user interface is the most up-to-date	Select: <ul style="list-style-type: none"> ▪ Send data on the main user interface, OR ▪ Receive data on the simplified user interface.
The simplified user interface is the most up-to-date	Select: <ul style="list-style-type: none"> ▪ Send data on the simplified user interface, OR ▪ Receive data on the main user interface.

- 3 Confirm your action.



Result: A progress bar appears.

- 4 Wait for the progress bar to finish and start flashing.

Result: Both interfaces have identical software.

- 5 Power OFF the indoor unit.

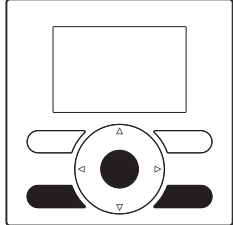
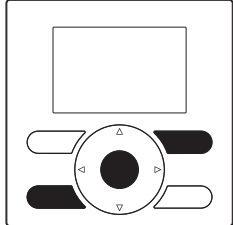
i INFORMATION

Copying the software from one user interface to the other transforms the receiver into the sender. Depending on which interface received the update, you now have either two main user interfaces or two simplified user interfaces.

To convert the updated interface

- 6 Make sure the indoor unit is powered OFF.

- 7 Do one of the following:

If	Then
The main user interface received the software of the simplified user interface	Press the following buttons to convert it back into a main user interface: 
The simplified user interface received the software of the main user interface	Press the following buttons to convert it back into a simplified user interface: 

- 8 With the buttons pressed, power ON the indoor unit.

- 9 Wait until text appears on the display and then release the buttons.

Result: The interface is converted to its intended state.

