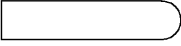
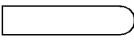
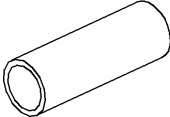
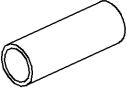


CLOSED PIPE KIT INSTALLATION MANUAL KHFP26A100C

■ This kit includes the following parts.

Name	Closed pipe of Gas pipe side	Closed pipe of Liquid pipe side	Insulation tube (Gas pipe side)	Insulation tube (Liquid pipe side)
Quantity	1 pc.	1 pc.	1 pc.	1 pc.
Shape	$\phi 15.9\text{mm}$ ($\phi 5/8$ inch) 	$\phi 9.5\text{mm}$ ($\phi 3/8$ inch) 		

■ This closed pipe kit is designed for the centralized BS units.
Use this kit when the indoor units are fewer than branches of the centralized BS unit
(in case of a branch remains).

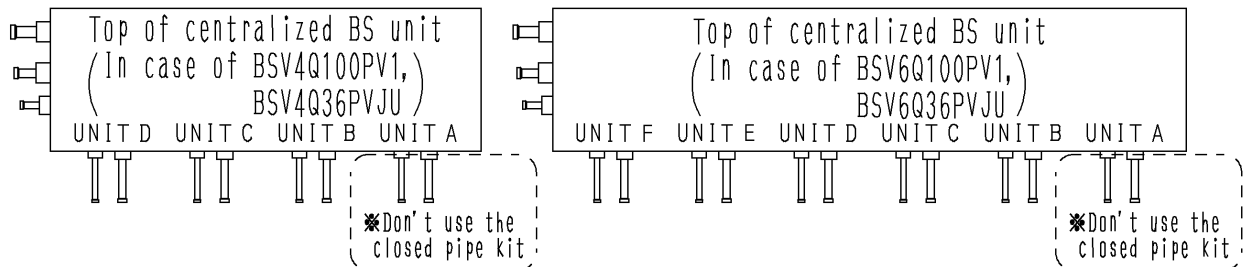
<NOTE>

In case of BS4~16Q14AV1

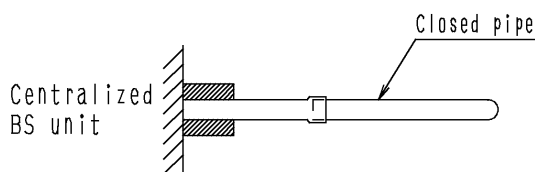
- Any of branch ports can be left open.

In case of BSV4(6)Q100PV1, BSV4(6)Q36PVJU

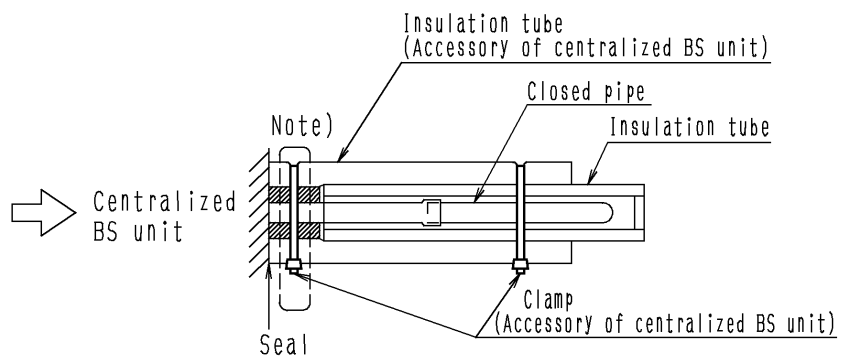
- The number of branches where the indoor unit is not connected is up to two places each refrigerant circuit, and up to one place each centralized BS unit.
- Don't use this closed pipe kit for the branch that is the furthest from three piping side of the centralized BS unit. (※See below)



INSTALLATION PROCEDURE



Connect the closed pipe kit to the branch not used.



Insulate the closed pipe with insulation tube attached to this kit, and additionally insulate it with insulation tube attached to centralized BS unit.

Note) Clamp at the position of the insulation tube of the centralized BS unit.

<INSULATION INSTALLATION PRECAUTIONS>

1. Seal so that air cannot be in and out of the end.
2. Do not over-tighten the clamp so as to maintain the insulation thickness.
3. Be sure to attach the insulation tube (Accessory of centralized BS unit) with the seam facing up. (See the right figure.)

