

Rotex LAN adapter

Table of Contents

Table of Contents.....	1
1 Purpose of the Rotex LAN adapter	2
2 Overview of compatible Rotex units (CB-platform).....	2
2.1 Room temperature control.....	3
2.2 DHW control.....	4

1 Purpose of the Rotex LAN adapter

The Rotex LAN adapter has the following functionality:

- RBRP069A61: Rotex LAN adapter with smartgrid functionality

The adapter act as a gateway between the Rotex indoor unit and a smartphone app (local network or server communication). This will open the possibility to control the unit with a smartphone app.

Next to this, the adapter has a smart grid control.

Both versions are using the P1P2 connection to the indoor unit to communicate.

2 Overview of compatible Rotex units (CB-platform)

Supported Rotex indoor unit:

RHBX-H*CB*

RHYHBX-H*AA*

RGSQH*AA*

RB/DLQ*CA*

Supported user interface:

RKRUCBL*

	Smartphone app control	Smart grid control
Limited LAN adapter features	O	X
Full LAN adapter features	O	O

In following hydro & user interface software the P1P2 implementation does only support the **limited LAN adapter features** (*only smartphone app control*):

Hydro software	ID4302(*), ID4562, ID4303(*) ID4563, ID4304(*), ID4564, ID4583	(*) No software update possible (<i>hardware restriction</i>) <i>Replace hydro PCB with 512kB CPU type</i>
User interface software	V01.15.00 V01.16.00	Older user interface sw versions are not supported and should be updated

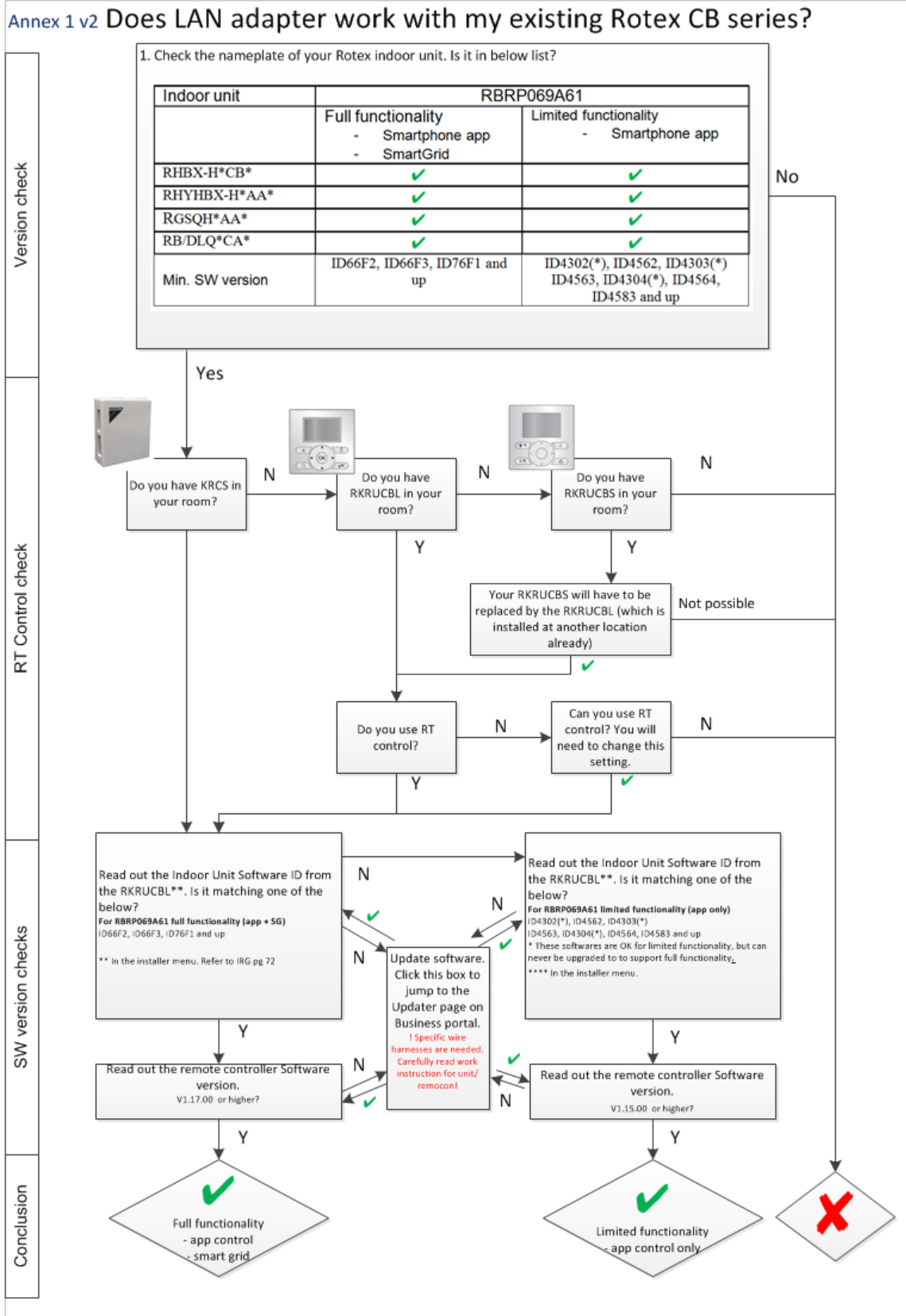
Only smartphone app control is supported. The smart grid functionality will not work

In following hydro & user interface software the P1P2 implementation has been upgraded with LAN adapter compatibility data to support the **full LAN adapter features**:

	From version xxxx onwards and future versions	Existing versions at end of 2017
Hydro software	From ID66F2 onwards and future versions	ID66F2, ID66F3, ID76F1, ID7401
User interface software	From V01.17.00 onwards and future versions	V01.17.00, V01.18.00, V01.19.00

Remark: future versions will not be added as full LAN feature support and will be indicated in the option list of the Rotex units. All the hydro and software versions references are mentioned to be able to check the situation in the change-over period.

2.1 Room temperature control



Remark smart grid: If the unit is in LWT control, the DHW buffering will only start when the LWT homescreen is off or when LWT is not allowed due to ambient temperature to high/low
([4-02]space_heating_OFF_high_ambient_temp, [F-01] space_cooling_OFF_low_ambient_temp)

2.2 DHW control

Does LAN adapter work with my existing Rotex CB series?

